



# **PANDUAN PROSES PEMASANGAN SIJIL DIGITAL G2**

a. Layar <https://ez.hasil.gov.my/> dan klik pada Bantuan



**PENGUMUMAN**

26 Feb 2015

e-Filing Bagi Tahun Taksiran 2014

**KEPERLUAN MINIMA**

- Microsoft Windows (service pack terkini) XP, Vista, 7, 8, Linux dan Macintosh
- Internet Explorer 8.0, Mozilla Firefox 4.0, Google Chrome 8.0 atau Safari 3.2

**PERKHIDMATAN**

- TAEf
- ByrHasil
- e-Daftar
- e-Data PCB
- e-Filing
- e-Filing CKHT / WHT
- e-Kemaskini

**Log Masuk**

Sila masukkan No. Rujukan (No. Pengenalan) dan Kata Laluan. Klik **Hantar**.

No. Pengenalan

No. Kad Pengenalan Baru  
 No. Pasport  
 No. Tentera  
 No. Polis

**Semula Hantar**

Permohonan No. PIN

Login Kali Pertama

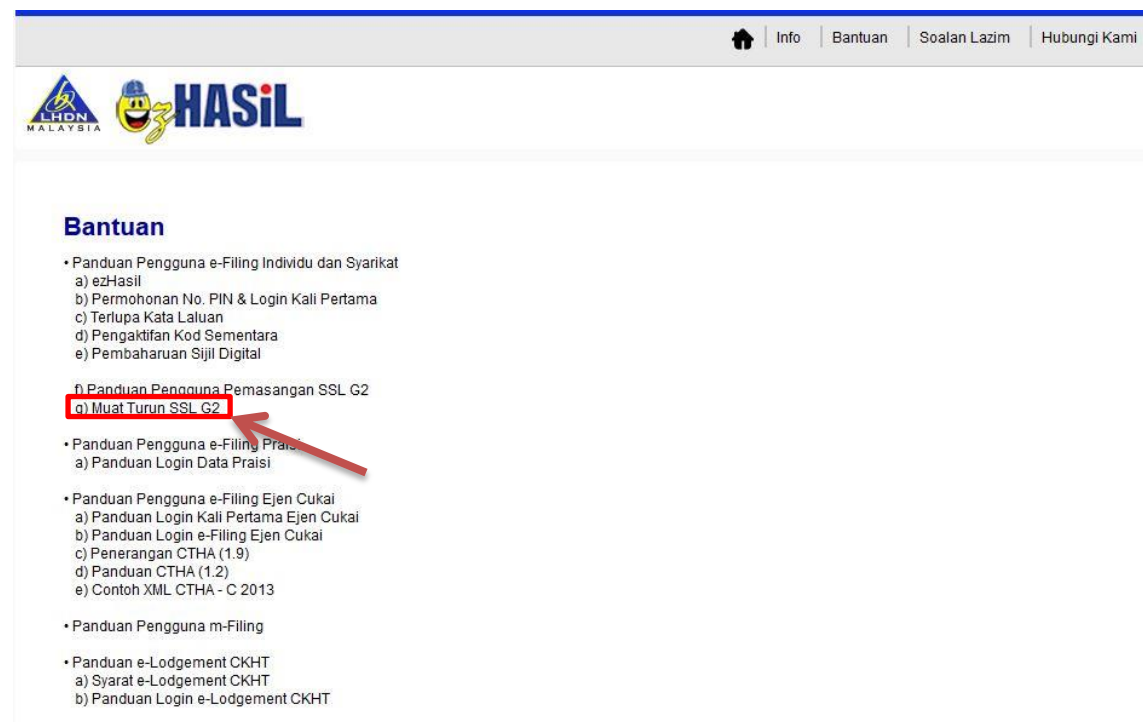
Terlupa Kata Laluan

Pengaktifan Kod Sementara

Perlu bantuan?  
 1-800-88-5436 (LHDN) /  
 +603-7713 6666 (Luar Negara)

Click [here](#) for ezHASiL user manual.

b. Klik pada Muat Turun SSL G2



**Bantuan**

- Panduan Pengguna e-Filing Individu dan Syarikat
  - a) ezHasil
  - b) Permohonan No. PIN & Login Kali Pertama
  - c) Terlupa Kata Laluan
  - d) Pengaktifan Kod Sementara
  - e) Pembaharuan Sijil Digital
- Panduan Pengguna Pemasangan SSL G2
  - a) Muat Turun SSL G2
- Panduan Pengguna e-Filing Praisi
  - a) Panduan Login Data Praisi
- Panduan Pengguna e-Filing Ejen Cukai
  - a) Panduan Login Kali Pertama Ejen Cukai
  - b) Panduan Login e-Filing Ejen Cukai
  - c) Penerangan CTHA (1.9)
  - d) Panduan CTHA (1.2)
  - e) Contoh XML CTHA - C 2013
- Panduan Pengguna m-Filing
- Panduan e-Lodgement CKHT
  - a) Syarat e-Lodgement CKHT
  - b) Panduan Login e-Lodgement CKHT

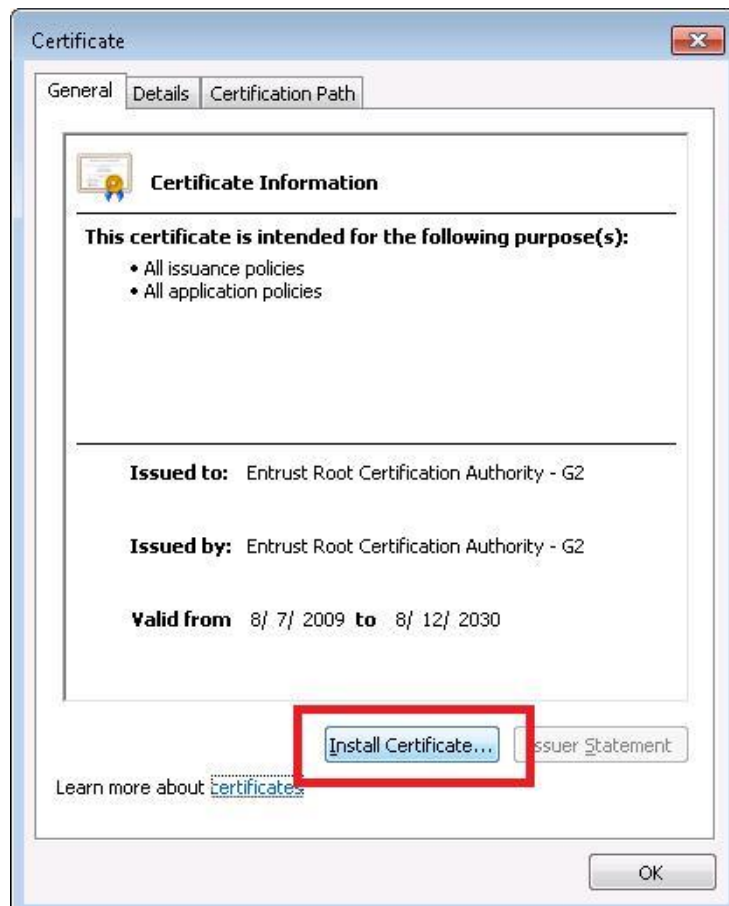
c. Klik pada Save

The screenshot shows the ezHASIL website interface. At the top, there is a navigation bar with a home icon, 'Info', 'Bantuan', 'Soalan Lazim', and 'Hubungi Kami'. Below the navigation bar is the ezHASIL logo. The main content area is titled 'Bantuan' and contains a list of links for various services. At the bottom of the page, a download dialog box is displayed. The dialog box has a title bar that reads 'Do you want to open or save entrustG2.cer (1.52 KB) from ez.hasil.gov.my?'. It contains three buttons: 'Open', 'Save', and 'Cancel'. The 'Save' button is highlighted with a red box, and a red arrow points to it from the right.

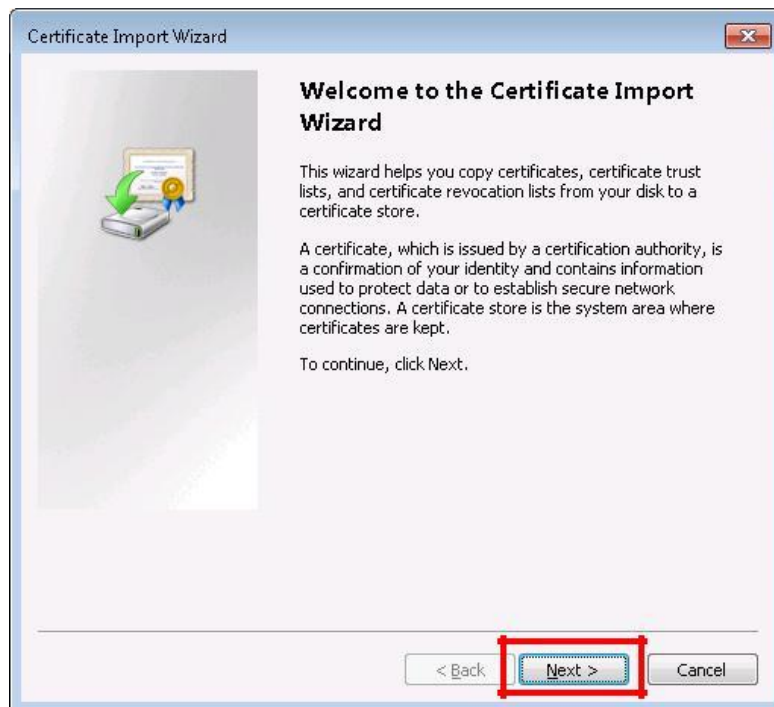
d. Apabila muat turun telah siap, klik pada Open.

The screenshot shows the ezHASIL website interface after the download is complete. The navigation bar and logo are the same as in the previous screenshot. The 'Bantuan' section is also visible. At the bottom of the page, a message box is displayed with the text 'The entrustG2 (1).cer download has completed.' The message box is highlighted with a red box. To the right of the message box, there is an 'Open' button, which is also highlighted with a red box. A red arrow points to the 'Open' button from the left.

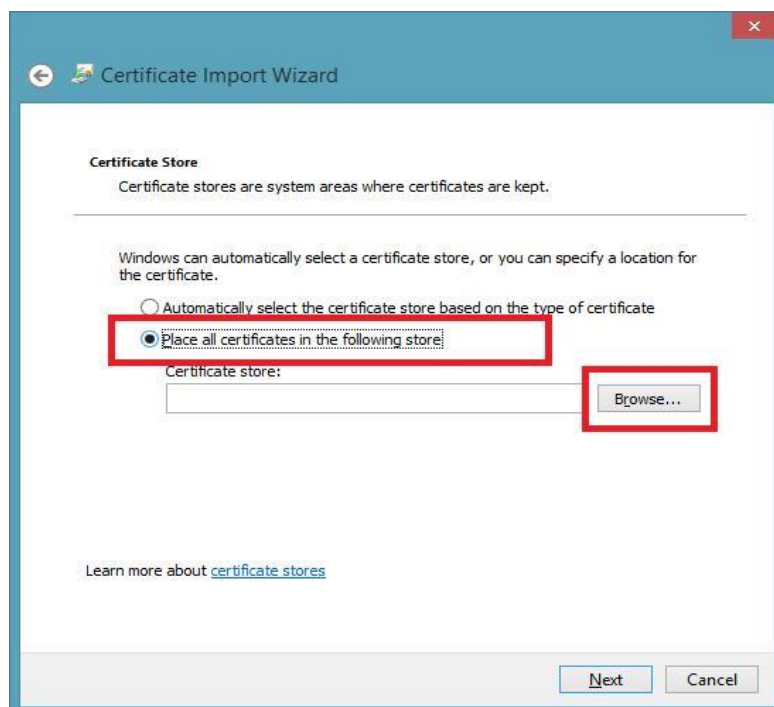
d. Paparan berikut akan dipaparkan. Klik Install Certificate.



- e. Paparan berikut akan dipaparkan. Klik Next.



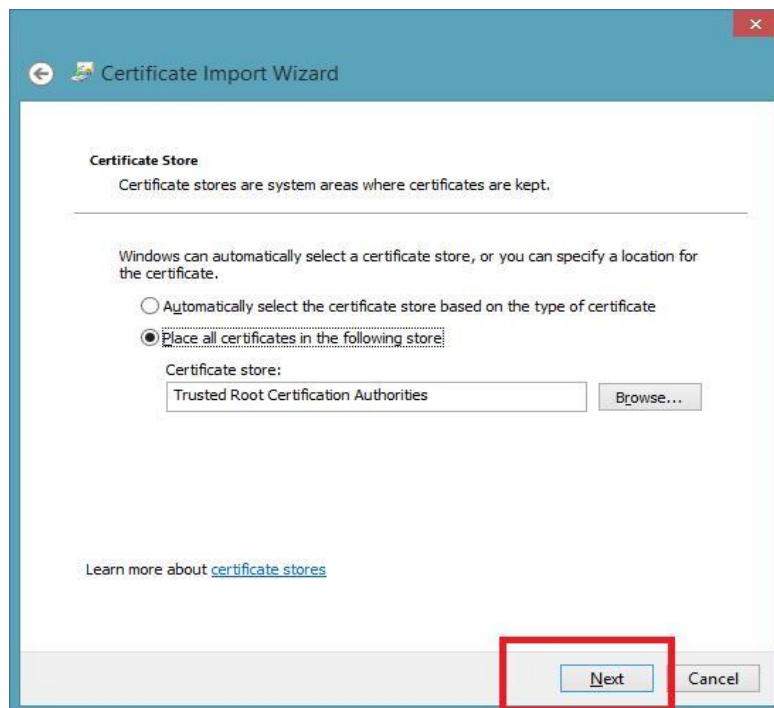
- f. Paparan berikut akan dipaparkan. Pilih pilihan seperti dibawah dan klik Browse



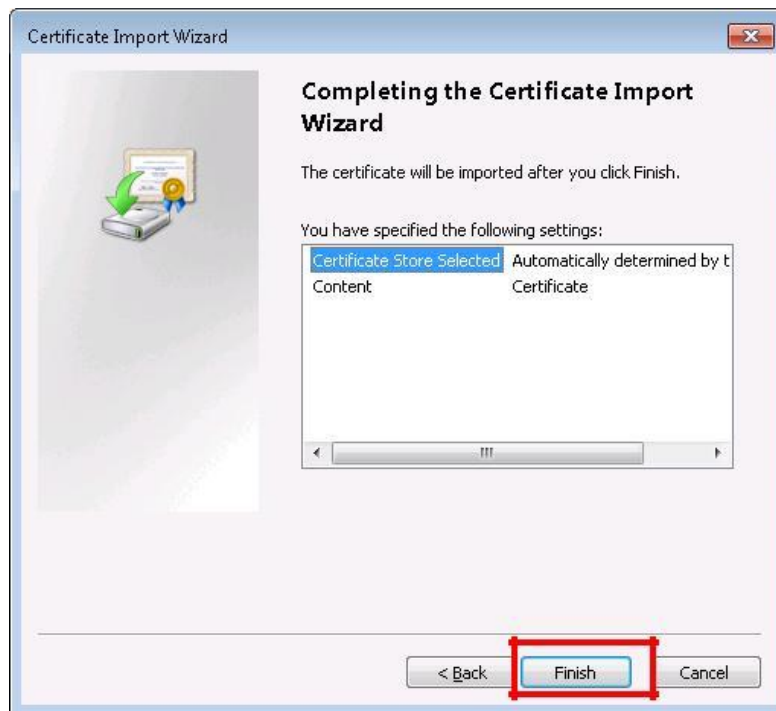
- g. Paparan berikut akan dipaparkan. Pilih pilihan seperti di bawah dan klik Ok



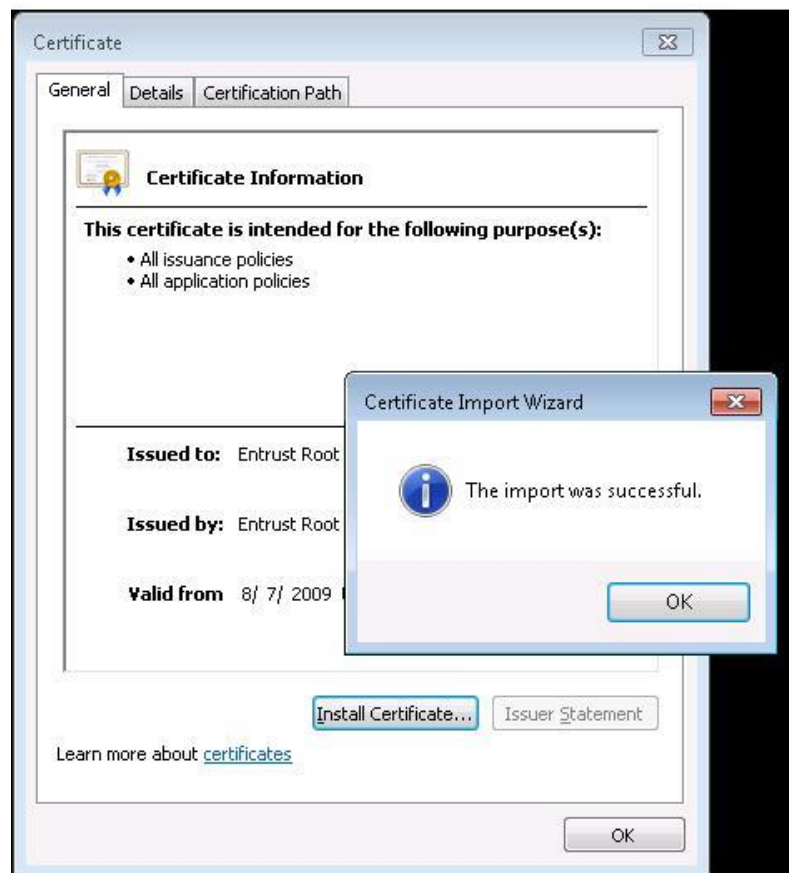
- h. Paparan berikut akan dipaparkan. Klik Next



- i. Paparan berikut akan dipaparkan. Klik Finish



- j. Paparan berikut akan muncul jika pemasangan sijil digital tersebut berjaya. Klik OK.



- k. Proses pemasangan sijil digital telah berjaya dilakukan.